



One Root, Two Worlds

Turkiye | China Capsule Collection FW 26-27

İTÜ | Faculty of Textile Technologies and Design
Fashion Design Program

Belt & Road Fashion Gala

by
Beyza Nur Yılmaz

About me

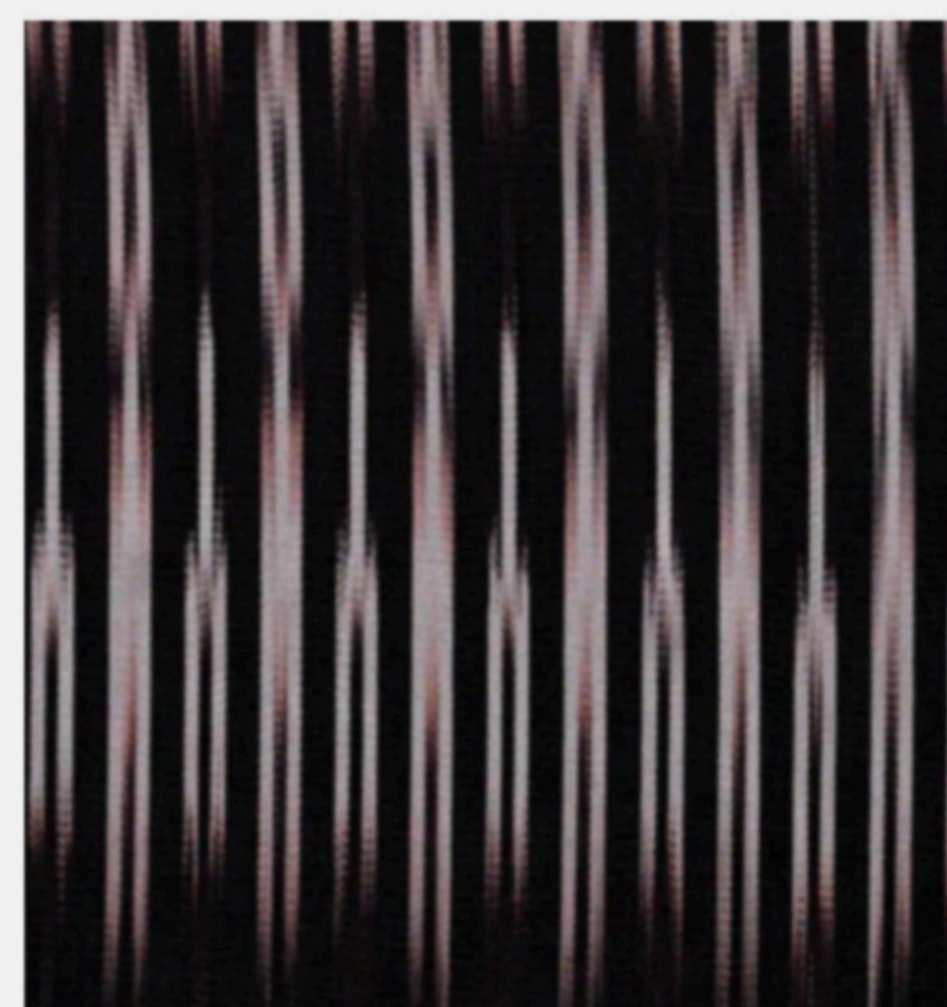
Hi, I'm Beyza Yilmaz, a dual-degree Fashion Design student at the Fashion Institute of Technology in New York and Istanbul Technical University, graduating in 2026. Over the past years, I've gained hands-on experience in designing womenswear, menswear, prints, and uniforms, working with both emerging and established international brands, and creating custom pieces for public figures. I am particularly interested in combining craftsmanship with sustainability, often incorporating upcycled materials and cultural inspirations into my designs, which allows me to create meaningful and innovative pieces. My work has been recognized on the Dean's List at FIT, and I was honored to win Colin's "Denim Fikrim" competition, which focused on sustainable and emotionally resonant denim design. I am skilled in Adobe Suite, CLO3D, and Gerber, and have practical expertise in draping, pattern making, and couture techniques. I enjoy storytelling through fashion, exploring how design can reflect personal and cultural narratives, and I am excited to bring my creativity, technical skills, and passion for thoughtful design to projects that challenge and inspire me in the global fashion industry.

“Two Cultures, One Root” explores the profound connections between Turkish and Chinese cultural heritage, emphasizing shared values of female strength, protection, and creative energy. Though the symbols and visual languages of each culture arise from distinct historical and geographical contexts, they converge in their celebration of women as central, empowering figures. Turkey’s “Hands-on-hips” (Eli Belinde) motif—symbolizing fertility, guardianship, and female power—resonates with Chinese symbols such as the lotus, pomegranate, and Nüwa’s spiral forms. Merged with Eli Belinde, these symbols create a unified motif that embodies shared meanings of femininity, fertility, and protection, underscoring the universality of women’s roles across time and place.

The collection also honors textile traditions and artisanal techniques, weaving together handmade Turkish crochet and seraser fabrics with Chinese silk and stylized embroidery. Accessories, motifs, and structural details form a dialogue between the two heritages, showing how distinct traditions can coexist, inspire, and create a cohesive narrative. In essence, “Two Cultures, One Root” places women—and the symbolic, material, and cultural expressions surrounding them—at the heart of an intercultural exchange, bridging East and West, past and present, tradition and innovation, and celebrating a shared story of strength, creativity, and continuity.



Fabrics



Kutnu
 Kutnu is a traditional handwoven Turkish fabric from Gaziantep, known for its colorful stripes, lightweight feel, and rich cultural heritage.
 %38 cotton / %62 rayon

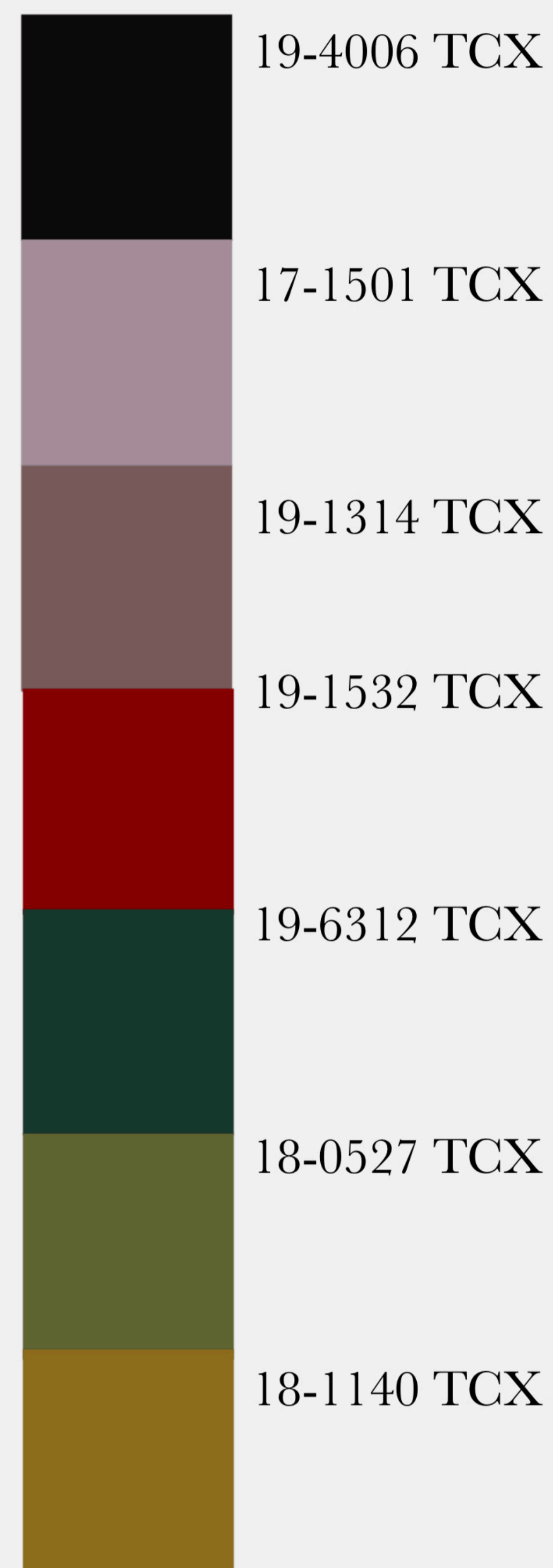


Seraser
 Seraser is a luxurious Ottoman-era fabric, traditionally used in palace attire, valued for its glossy, elegant texture and rich, regal appearance.
 100% silk



Chinese Silk
 Chinese silk is a smooth, lustrous fabric renowned for its elegance, fine texture, and rich cultural heritage, often used in traditional garments and embroidery.
 100% silk

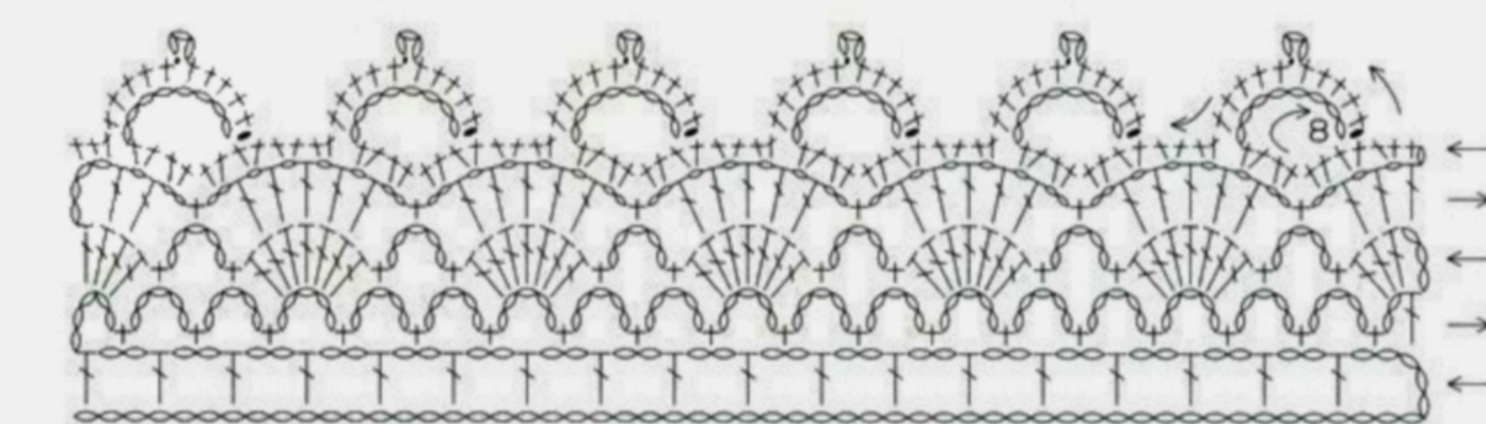
Colors



Patterns



The “Eli Belinde” motif, a traditional symbol from Turkish culture representing femininity and fertility, embroidered in golden thread.

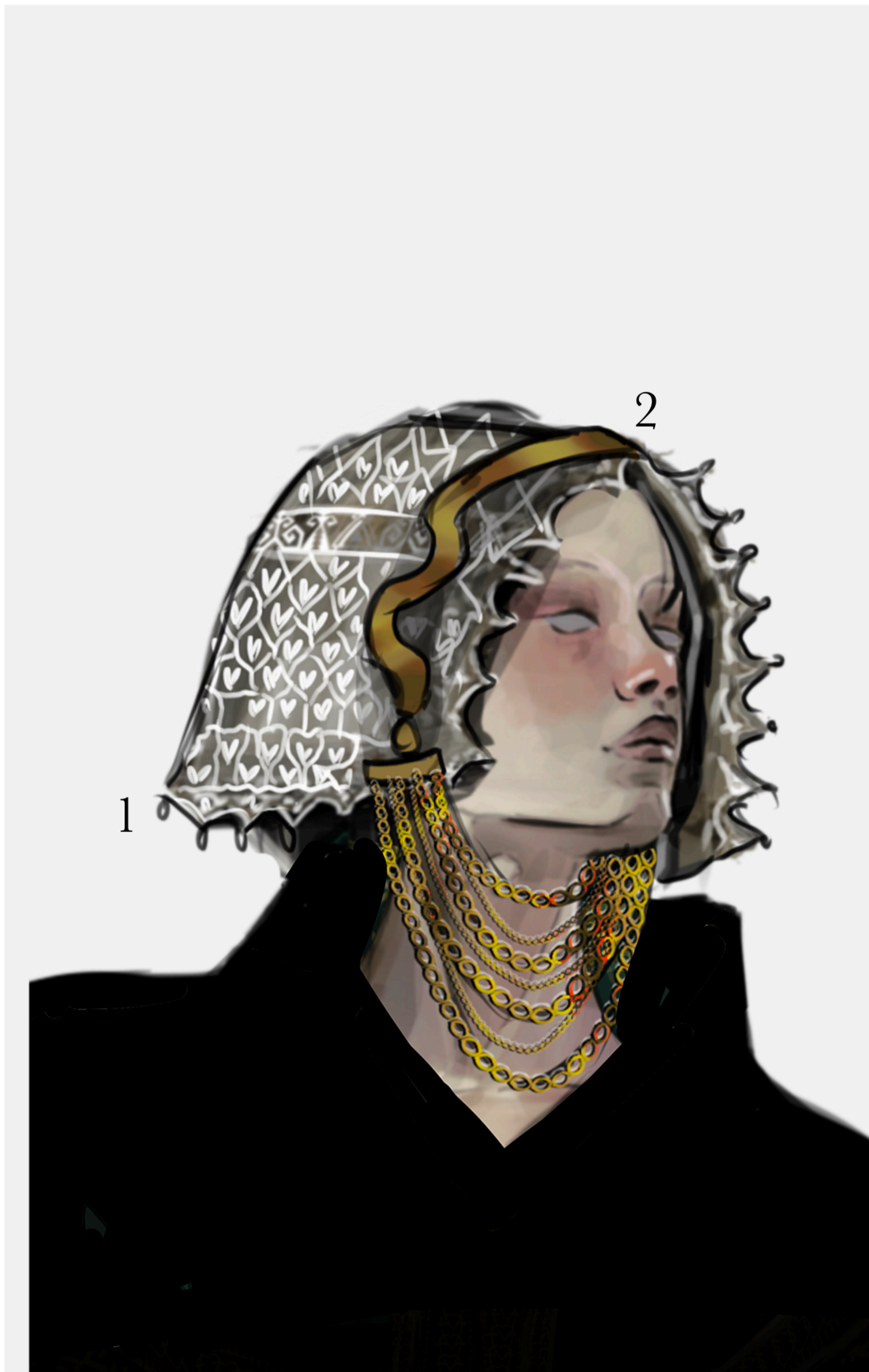


Traditional Turkish crochet edging with “pik” tips, made of chains and double crochets, adding a light and decorative finish.



This motif layers Chinese symbols—the lotus (purity and rebirth), pomegranate (fertility and abundance), and spiral (Nüwa’s protective energy)—onto the Turkish “Eli Belinde,” a symbol of female power and guardianship. By merging these forms, it becomes a cultural bridge that highlights shared meanings of femininity, resilience, and creative strength across both traditions.

Accessories



1- Mini Crochet Headpiece

This small crochet piece, crafted by hand, features fine crochet with the “Eli Belinde” motif, emphasizing female strength, fertility, and traditional craftsmanship.

2- Copper Headpiece

This crown-like copper headpiece with cascading chains symbolizes protection, strength, and guardian energy, highlighting the wearer’s presence and central role.

3



3- Unity Belt

The belt unites Turkish and Chinese symbols as a central narrative element. Crafted from copper, it symbolizes strength, warmth, and protection. The design is inspired by traditional Anatolian headpieces from Turkish culture, integrating their structural and ornamental qualities into a wearable form. The Turkish “Eli Belinde” motif represents female power, fertility, and guardianship, while the Chinese symbols—lotus (purity and rebirth), pomegranate (fertility and abundance), and spiral (Nüwa’s creative, protective energy)—add layers of cultural meaning. Together, these symbols illustrate the universal power of women, highlighting both their creative and protective qualities, and making the belt a striking fusion of symbolism and craftsmanship.

4



4- Empower Crown

Crafted entirely in crochet, this headpiece uses fine crochet for texture and thick crochet to form the iconic “Eli Belinde” motifs, emblematic of female strength, fertility, and protection. A refined celebration of traditional Turkish craftsmanship, it crowns the outfit with elegance and cultural resonance.





Design 1

The look reflects the deep richness of Turkish culture, using seraser and kutnu fabrics. Seraser, valued in Ottoman palace culture, symbolizes luxury and nobility, while kutnu, originating from Gaziantep, is a traditional handwoven fabric known for its colorful stripes. These fabrics were chosen to highlight cultural heritage and the delicacy of handcraft.

The caftan features an “Eli Belinde” motif embroidered to symbolize fertility, abundance, and female strength. Crochet details in the same color adorn the sleeve hems. The waist design draws inspiration from traditional Turkish şalvar, while the crochet headpiece represents women’s labor. The design emphasizes cultural memory and the empowering role of women within Turkish history.



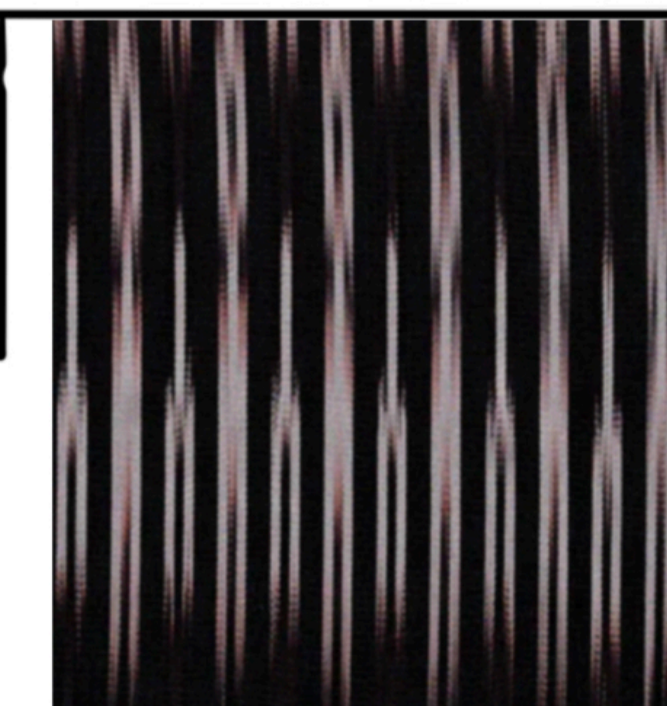
BELT AND ROAD	STYLE NUMBER: TK-001	SIZE RANGE: S-XL	DATE PAGE CREATED: 08.21.2025
PRODUCT TECHNICHIAN: BEYZA NUR YILMAZ	DELIVERY DATE: 08.24.2025	SEASON: FW 26-27	
STYLE NAME: Eternal Kaftan	SAMPLE SIZE: S/36	PRODUCT CATEGORY: CAPSULE COLLECTION	STYLE DETAIL

PRODUCT DESCRIPTION:

Caftan inspired by traditional Turkish motif embroidery

FRONT VIEW	BACK VIEW	DETAILS
		<p>The "Eli Belinde" motif, a traditional symbol from Turkish culture representing femininity and fertility, embroidered in golden thread.</p> <p>Traditional Turkish crochet edging with "pik" tips, made of chains and double crochets, adding a light and decorative finish.</p>

	FABRIC 1	FABRIC 2
REF*	KUTNU-CR38/62-140	
COMPOSITION	38% Cotton / 62% Rayon	
WEIGHT	140 g/m ² (GSM)	
PLACEMENT	Body	






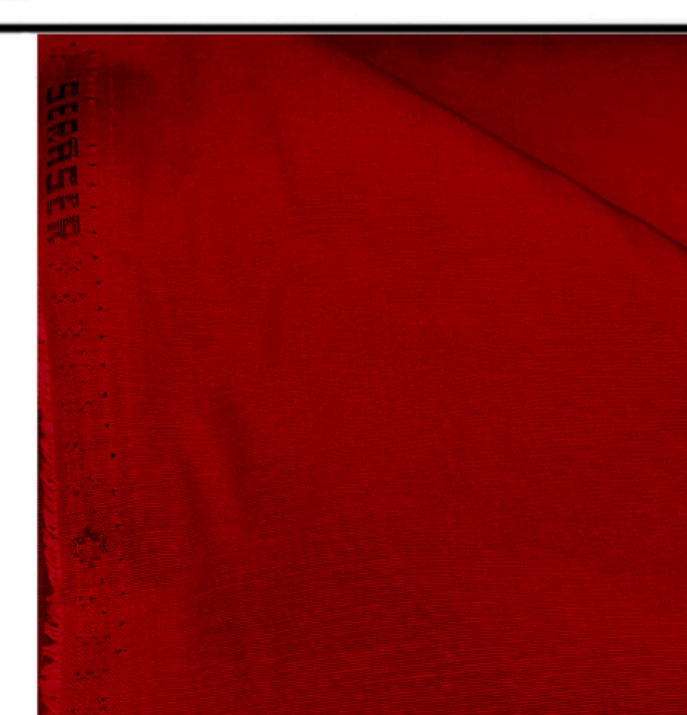
BELT AND ROAD	STYLE NUMBER: TK-002	SIZE RANGE: S-XL	DATE PAGE CREATED: 08.21.2025
PRODUCT TECHNICHIAN: BEYZA NUR YILMAZ	DELIVERY DATE: 08.24.2025	SEASON: FW 26-27	
STYLE NAME: Whispering Flow	SAMPLE SIZE: S/36	PRODUCT CATEGORY: CAPSULE COLLECTION	STYLE DETAIL

PRODUCT DESCRIPTION:

Long draped dress inspired by traditional Turkish shawls

FRONT VIEW	BACK VIEW	DETAILS
<p>Sleeveless long dress with double turtleneck and central back zipper closure</p> <p>The drapes inspired by Turkish şalvar appear only at the waist of the dress.</p>	<p>Eli Belinde embroidery at the back</p> <p>The front features a V-shape, while the back remains plain.</p>	 <p>The “Eli Belinde” motif, a traditional symbol from Turkish culture representing femininity and fertility, embroidered in golden thread.</p>

	FABRIC 1	FABRIC 2
REF*	SERASER-SL100-LIGHT	
COMPOSITION	100% Silk	
WEIGHT	90-110 g/m ²	
PLACEMENT	Body	





Design 2

This look merges Turkish and Chinese cultural elements, featuring a patterned jacket inspired by Chinese symbols of femininity and fertility—lotus, pomegranate, and Nüwa spirals—combined with Turkish vest forms and a mandarin collar silhouette. The upper layer uses Turkish seraser, while the long skirt is Chinese silk, blending textures and traditions. Accessories include a broomed copper headpiece and a mini crochet headpiece, while the Unity Belt acts as a cultural bridge, visually and conceptually connecting the Turkish “Eli Belinde” motif with Chinese symbols, emphasizing the shared values of female strength, protection, and creativity across cultures.



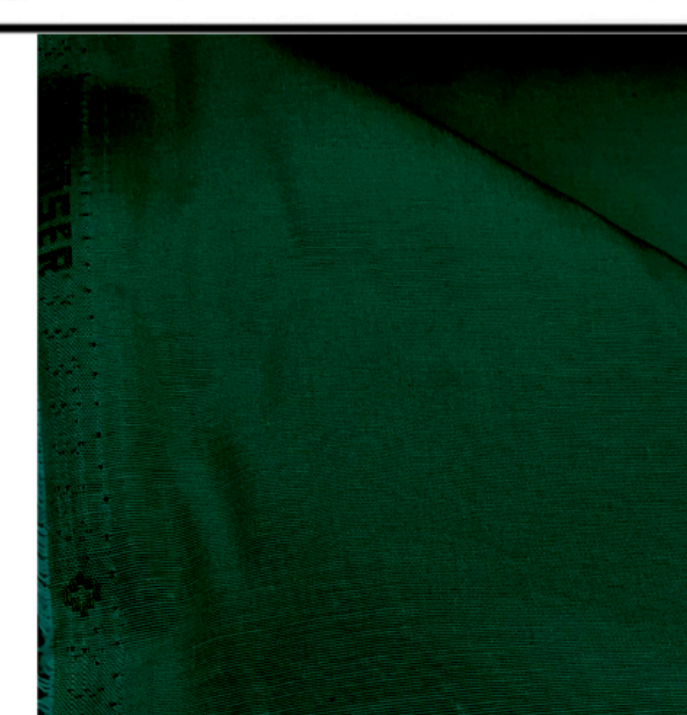
BELT AND ROAD	STYLE NUMBER: TC-003	SIZE RANGE: S-XL	DATE PAGE CREATED: 08.21.2025
PRODUCT TECHNICHIAN: BEYZA NUR YILMAZ	DELIVERY DATE: 08.24.2025	SEASON: FW 26-27	
STYLE NAME: Silken Harmony Jacket	SAMPLE SIZE: S/36	PRODUCT CATEGORY: CAPSULE COLLECTION	STYLE DETAIL

PRODUCT DESCRIPTION:

Embroidered jacket inspired by traditional Chinese jackets and Turkish vests

FRONT VIEW	BACK VIEW	DETAILS
		<p>Inspired by symbols representing femininity, fertility, and mother goddess figures in Chinese culture. Key elements include the lotus (Liánhuā), pomegranate (Shíliú), and spiral forms (symbolizing Nǚwā's serpentine body), combined to create this unique motif.</p> <p>Traditional Turkish crochet edging with "pik" tips, made of chains and double crochets, adding a light and decorative finish.</p>

	FABRIC 1	FABRIC 2
REF*	SERASER-SL100-HEAVY	
COMPOSITION	100% Silk	
WEIGHT	180-220 g/m ²	
PLACEMENT	Body	

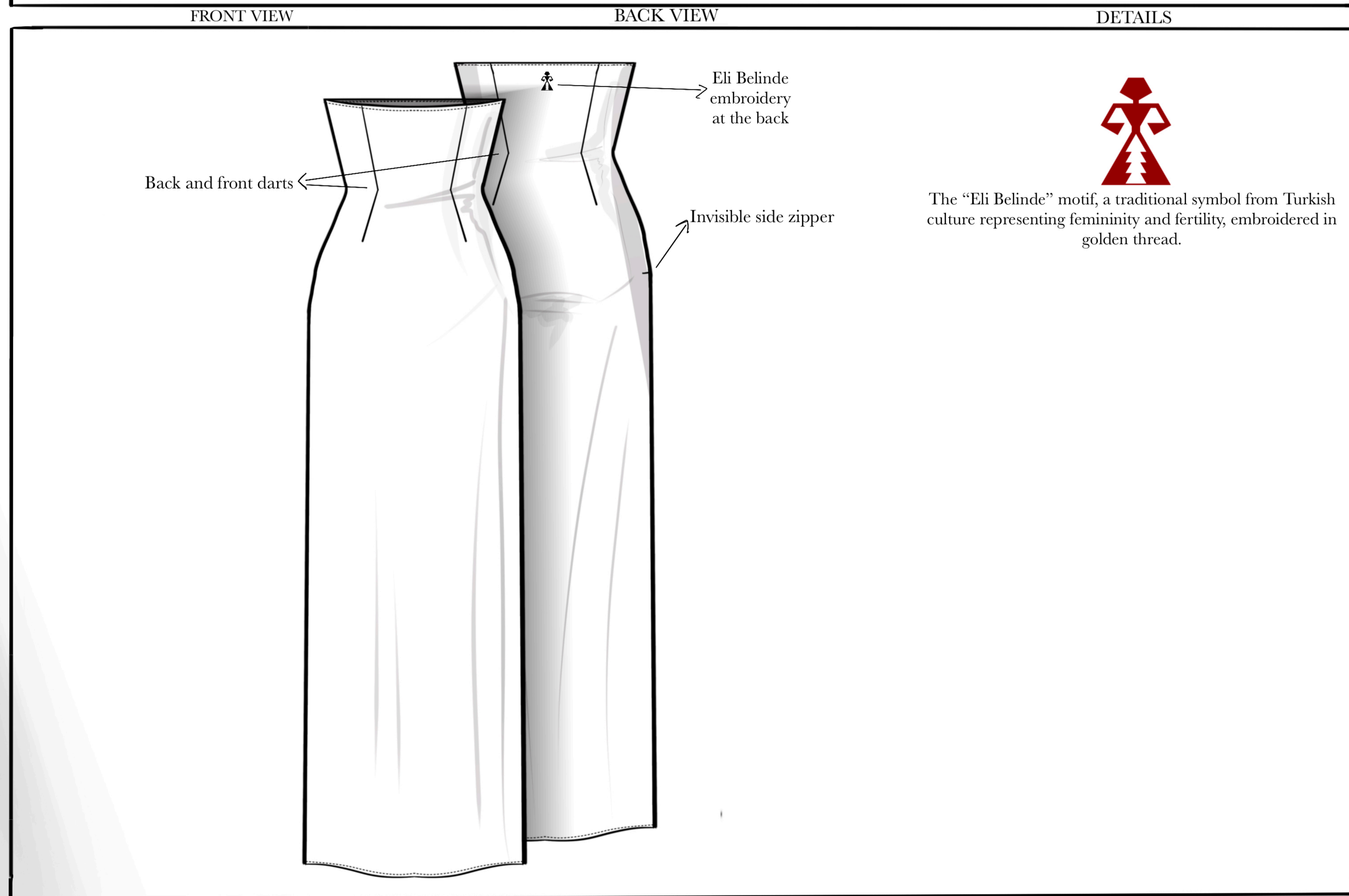




BELT AND ROAD	STYLE NUMBER: TC-004	SIZE RANGE: S-XL	DATE PAGE CREATED: 08.21.2025
PRODUCT TECHNICHIAN: BEYZA NUR YILMAZ	DELIVERY DATE: 08.24.2025	SEASON: FW 26-27	
STYLE NAME: Pure Line Skirt	SAMPLE SIZE: S/36	PRODUCT CATEGORY: CAPSULE COLLECTION	STYLE DETAIL

PRODUCT DESCRIPTION:

High-waist, straight long skirt



	FABRIC 1	FABRIC 2
REF*	CHINESE-SILK-100	
COMPOSITION	100% Silk	
WEIGHT	80-120 g/m ²	
PLACEMENT	Body	

